



# Welcome to the Cambridge Biomedical Campus CBC Open Forum

18 March 2026

Sign up to our  
newsletter

SCAN





# Welcome

<b>5.30-5.45pm</b>	- Introduction - Current issues
<b>5.45-6.00pm</b>	Expansion proposals, Draft Local Plan
<b>6-6.30pm</b>	Transport: progress against our plan
<b>6.30-6.45pm</b>	Royal Papworth Hospital Charity
<b>6.45pm</b>	Other news
<b>7pm</b>	Close



# What is CBC Ltd?

Formed in 2021 as a **non-profit partnership** which represents the main organisations located on the Cambridge Biomedical Campus.

Neither a landowner nor a developer; some of our members own land; we do work with local government and landowners to share our views on how the campus should develop.

Our purpose is to support the sustainable development of the site to keep it globally competitive as a centre for health, education and life sciences.

We want to make the Campus a better place to work, visit and live beside.

# We exist to deliver global excellence in health, education and life sciences

## abcam

Established in Cambridge; supply two thirds of the world's life scientists with over 110,000 products

## AstraZeneca

The UK's largest biopharmaceutical company with global HQ in Cambridge

## UNIVERSITY OF CAMBRIDGE

Contributes nearly £30 billion to the economy annually and supports more than 86,000 jobs across the UK with 9 Institutes on. Campus and the UK's leading school of clinical medicine



Cambridge  
Biomedical Campus  
CBC Ltd membership



UKRI MRC Laboratory of Molecular Biology

Awarded 12 Nobel prizes; commercialisation of scientific discoveries generated over £700 million, to help support UK science



Cambridgeshire and Peterborough  
NHS Foundation Trust

Health and social care organisation and have clinical teams providing services in inpatient, community and primary care settings



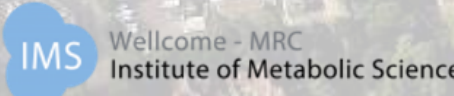
Cambridge University Hospitals  
NHS Foundation Trust

Major regional centre for specialised services; hosts local Care Partnership; a major UK research centre; the first end-to-end deployment of Epic in Europe



Royal Papworth Hospital  
NHS Foundation Trust

UK's first successful heart transplant, world's first heart-lung and liver transplant and world's first permanent battery-operated heart



# How we deliver our purpose

Directors oversee a business plan covering three domains:



## Optimal development

Ensuring any development of the Campus prioritises sustainable and inclusive growth to drive improvements in health, education and life sciences; engage government planning leads; work with landowners and developers to promote an holistic approach, including provision of sustainable travel.



## Curation of place

Attend to both physical and human dimension of the campus environment so that it becomes a better place to work, visit and live next to, enables members to attract and retain talent, and facilitates innovative collaborations.



## External engagement

Drive a coherent, compelling and collective narrative to government and key stakeholders, supporting policy and objectives of members, engaging community stakeholders and giving local people a voice in what we do. Sharing stories of health and life science impact.



# Current issues

## Consultations:

- Local Government Reorganisation
- Strategic Transport CIL  
(Community Infrastructure Levy)
- Development Corporation

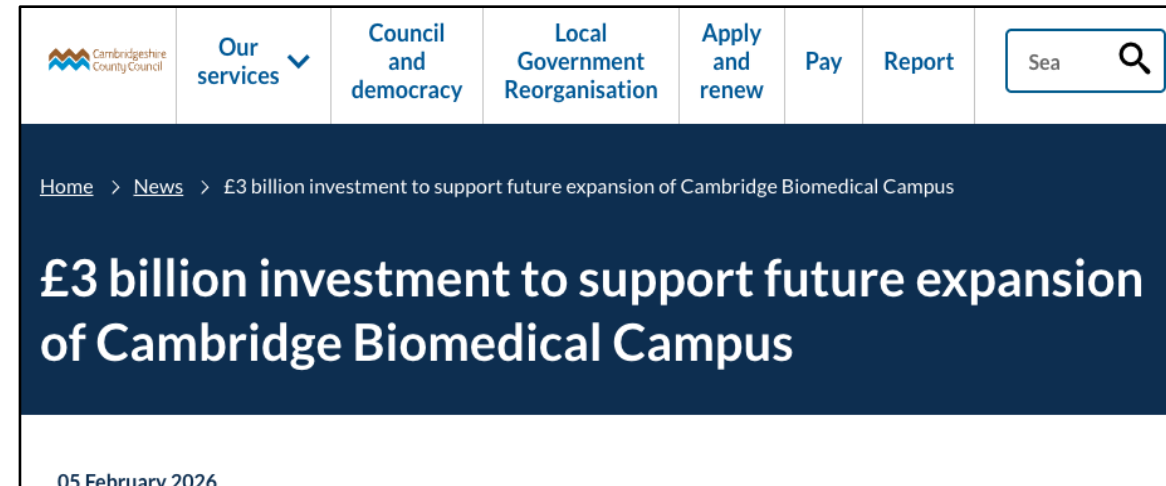
## CBC Review





# County Council Land: Partnership agreed on proposed expansion land

5th February: Special Meeting of the Cambridgeshire County Council Assets and Procurement Committee agreed a partnership with Prologis to support the future expansion of CBC.

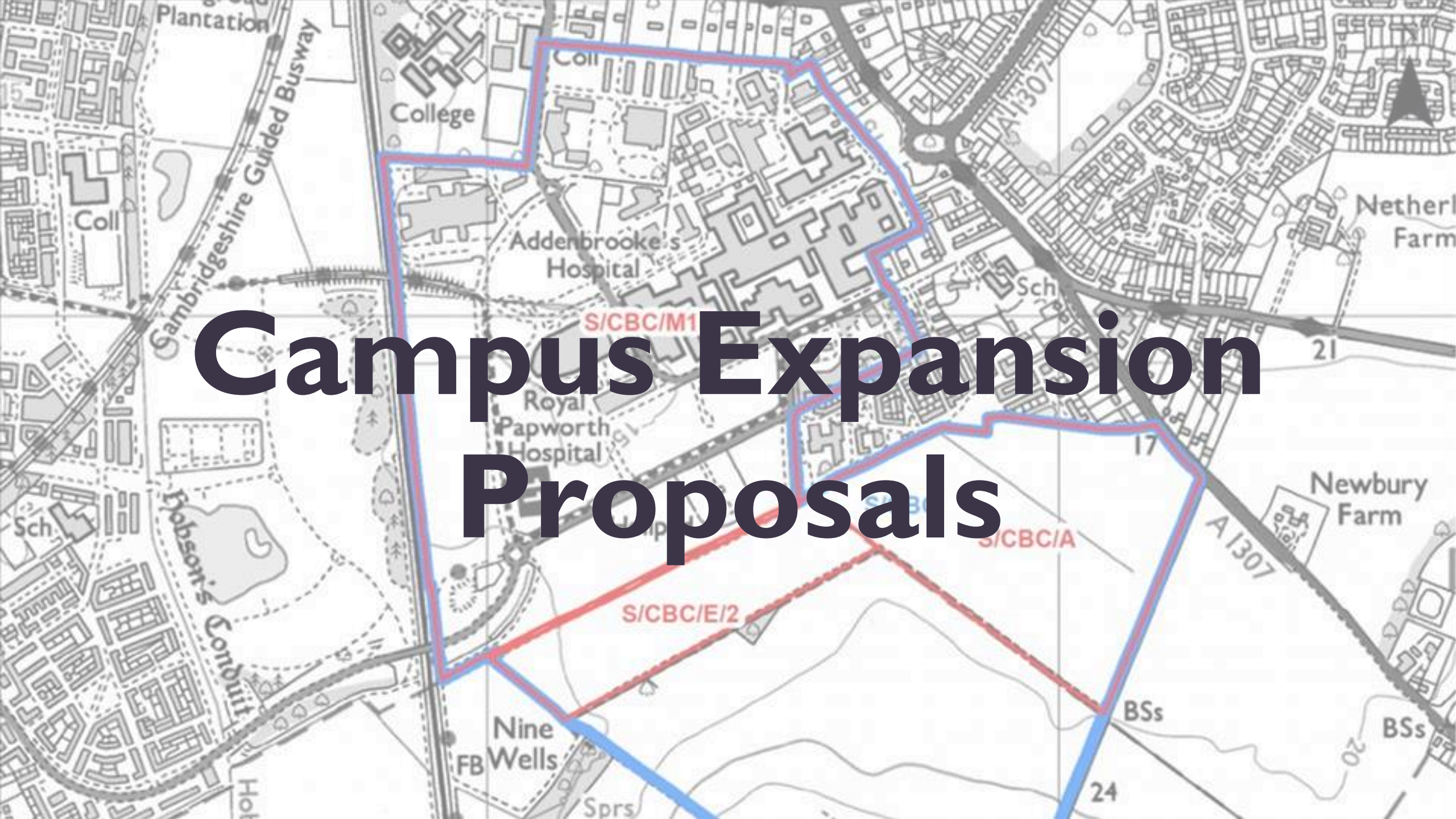


Separate from the Local Plan, although development would be subject to inclusion in the Local Plan.

CBC Ltd has not seen detail of this agreement. To be finalised by Dec 2026.

Prologis/CCC will carry out their own community engagement as part of this work.

# Campus Expansion Proposals





# What is the Local Plan?

A document Councils prepare, which sets out the **future land use and planning policies** for the area over a set time frame. It identifies **the need for new homes and jobs, and the services and infrastructure** to support them, and guides **where** this development should happen.

Local Plans are key in making decisions on planning applications in the area, alongside national planning policy and other supplementary guidance.

Cambridge City and South Cambs DC, through *Greater Cambridge Shared Planning (GCSP)*, are working together to create a **joint Local Plan** for Greater Cambridge. This will ensure a consistent approach to planning across both areas.



# Draft Local Plan

- Consultation throughout December and January (as highlighted at last Open Forum)
- The Draft Local Plan included proposals for releasing green belt land for development and expansion of the Campus.
- These proposals were put forward by the relevant landowners – The Pemberton Trust, Prologis and the Cambs County Council
- CBC Ltd responded to the consultation, and this will be published with the consultation documents by Greater Cambridge Shared Planning (GCSP), likely mid-late May.



# CBC Ltd Position February 2024

Feb 2024: Directors reviewed the landowners plans and sent a letter setting out the 5 core conditions under which CBC Ltd support may be secured. These conditions were:

1. **Infrastructure Delivery Plan (IDP)** required. Campus wide, deliverable, phased and funded
2. Submission, agreement and implementation of a **Transport Strategy**
3. Prioritisation of **mental health services** space on phase 4 land.
4. Programme of **community engagement** before GCSP submission
5. Legally binding agreement for holistic vision incl IDP



# Have our conditions been met?

No.	Issue	Progress
1	<b>Infrastructure Delivery Plan (IDP)</b>	We have not seen a final IDP. Proposals was that an MoU to act as an Infrastructure Delivery Strategy (IDP) – ie a commitment to work towards agreeing the IDP. Likely to not be entirely funded from expansion, requiring other landowners to contribute.
2	<b>Transport Strategy</b>	Updated information has been provided, but has limited detail on implementation. Set out role of Public Transport how the trip budget will work.
3	<b>Prioritisation of mental health services space on phase 4 land.</b>	No commitment received. Provision may be made via IDP – see 1.
4	<b>Community engagement before GCSP submission</b>	Two meetings were held with the local councillors and local community in Nov 2024. Commitments for further engagement were not pursued.
5	<b>Legally binding agreement for holistic vision incl IDP</b>	<ul style="list-style-type: none"><li>• Updated MoU is 1<sup>st</sup> planned step but not signed</li><li>• In any event MoU cannot be enforced through the plan process</li><li>• MoU likely to be unsatisfactory as not legally robust</li><li>• Not signed at this point.</li></ul>



**Any questions?**



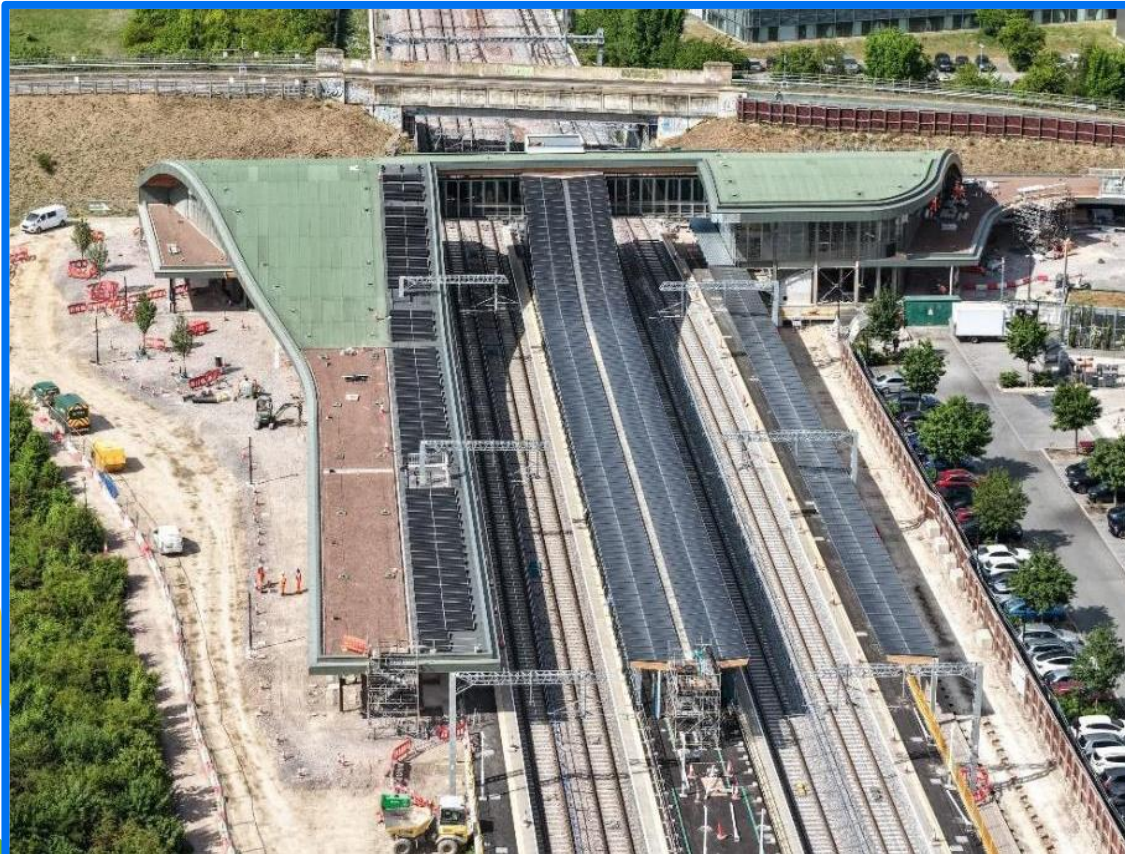
# Transport - Introduction

- Live Scheme Updates
- 5-year Travel & Transport Plan - Annual Review
- Transport Communications



# Cambridge South

- Opening June 2026

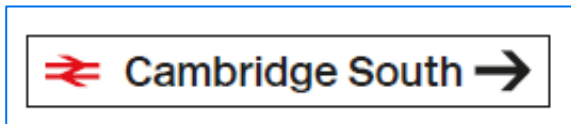




# Wayfinding

For Hospitals and  
Biomedical Campus

## Cambridge South





# Patient Courtesy Bus





# Busway Safety Works





# Busway Safety Works: Temporary Staff Shuttle





# Connector - Autonomous bus trial





# Real Time Traffic Sensors





# Transport – 5-year plan

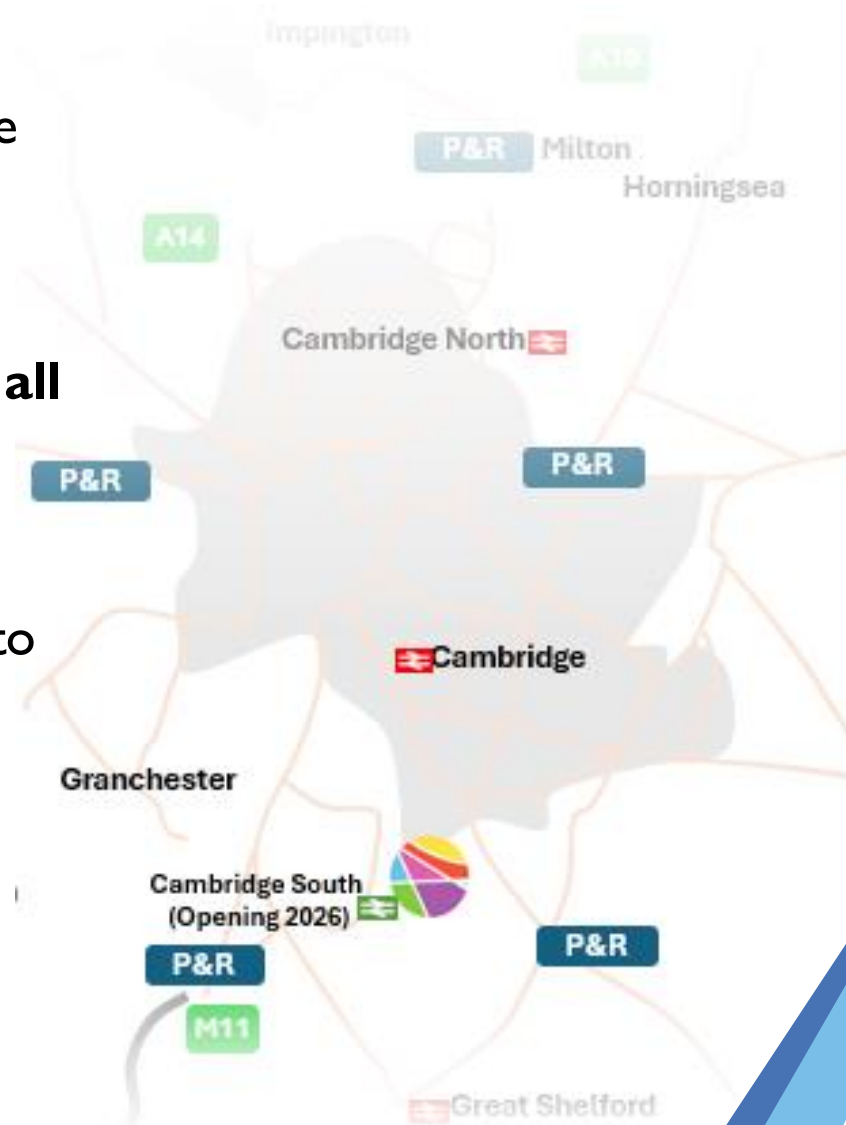
The 5-Year Travel and Transport Plan was prepared for campus the five-year period 2024-2029\*. The plan holds an all-encompassing aspiration to:

**Improve all journeys to, from and within the Campus for all users, including staff, visitors, and patients.**

It sets out and details **10 objectives** and **25 key transport measures** that should be taken forward over the 5-year period, to ensure the continued improvement of day-to-day operations.

The plan was informed by engagement and consultation to understand the existing situation, constraints, opportunities and needs of all users associated with the Campus. These valuable insights helped, and continue to, shape the plan.

[A transport plan for Cambridge Biomedical Campus](#)





# Transport – 5-year plan

## 10 Objectives

Ten objectives were set to guide the plan over the five-years and underpin the ambition statement.

- 1 Access & Connectivity**  
Facilitate convenient, predictable, and where possible, cost-effective travel to CBC for staff, patients, business representatives and visitors.
- 2 Transport Infrastructure**  
Provide supportive transport infrastructure on the CBC to seamlessly support people to arrive at their destination and move intra-site in an effective, efficient and safe way.
- 3 Contribution to Greater Cambridge**  
Through the expansion of the CBC and the promotion of sustainable travel modes, make a positive contribution to the Greater Cambridge area.
- 4 Strategic Partnerships**  
Work with city and regional partners to make a positive contribution to the growth of the Cambridge economy, the quality of life for new and existing communities, and the development and delivery of transport and planning policies and schemes for the city and surrounding area.
- 5 Affordable Housing**  
Support and influence the development of affordable housing and staff accommodation located close to CBC, both reducing travel demand and reliance on motorised travel.
- 6 Air Quality**  
Minimise the CBC's environmental impact from transport and improve air quality.
- 7 Future Technologies**  
Support the above objectives by exploiting emerging and future technologies effectively and making the best use of world-class research from our partner organisations.
- 8 Campus Collaboration**  
To ensure cross-Campus collaboration amongst partners and collective empowerment for best practice, outcomes and efficiency.
- 9 Strategic Investments**  
Make the best use of external transport investments and opportunities within the next five years.
- 10 Wider Movement, Access and Interchange**  
Ensure that wider transport interchange and access is achieved at a Campus level. CBC having responsibility and a role for city-wide movement.

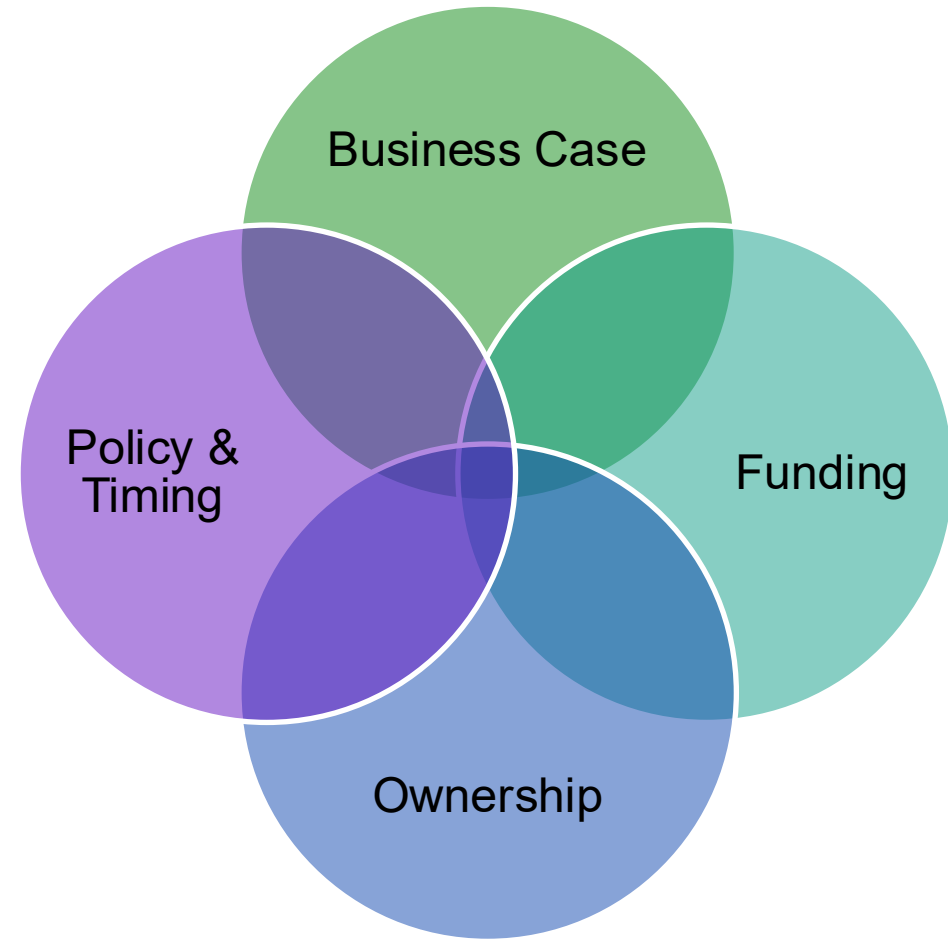


# Transport – 5-year plan

## Implementation

Delivery and Implementation requires choices, decisions and actions. Factors include:

- **Costs**
- **Benefits**
- **Prioritisation** derived from above, but also **deliverability** and **impact...**
- **Responsibility** who are the organisation(s) responsible for successful implementation
- **Collaboration & Shared Ambition**



Conditions for Success - 'Sweet Spot'



# Transport – 5 year plan

## 25 Measures



### Active Travel

- On-site active travel route improvements\*
- Off-site active travel route improvements
- Cycle parking and micromobility audit\*
- Develop near miss register\*
- Encourage cycle promotional schemes\*



### Public Transport

- Explore campus-wide bus strategy\*
- On-site public transport facility improvements
- Off-site public transport improvements



### Car Users

- Car park utilisation monitoring\*
- Explore campus-wide car sharing\*
- Electric vehicle car parking strategy\*



### Goods and Logistics

- Construction, roadworks and utilities forum and live database\*
- Last mile delivery strategy and consolidation



### Technology

- Utilise app-based technology\*
- Sensor-based real time monitoring\*
- Air quality monitoring\*
- Utilise future technological innovation and advancements



### Travel Behaviours

- Explore feasibility of flexible staff working patterns\*
- Undertake visitor travel surveys\*



### Other

- Review transport network for impaired individuals
- Utilise sustainable meanwhile uses approach
- Develop and adopt monitoring framework for the Travel & Transport Plan\*
- Develop new Travel and Transport Plan (2029-2034)\*
- Lobby for affordable housing
- Assist and support where possible with external transport infrastructure

\*Measures which are considered to be within the CBC's control and remit. Those without likely require collaboration.



# Transport – 5 year plan

Measure 8	Off-Site Public Transport Improvements
Measure 12*	Construction, Roadworks and Utilities Forum
Measure 13	Last Mile Delivery Strategy and Consolidation
Measure 15*	Real-Time Monitoring
Measure 17	Future Technological Innovation
Measure 20	External Transport Infrastructure
Measure 21	Affordable Housing
Measure 22*	Updated CBC Travel and Transport Plan
Measure 23*	Ensure regular success of measures is
Measure 25	Sustainable Meanwhile Uses



# Transport – Draft Priorities for 2026/27

- **Supporting active travel improvements**
  - routes, repairs and enhancements
  - promoting cycling, improved lighting and security - on and around campus
- **Bus strategy development**
  - supporting: increased ridership, building user confidence, information improvements, technological innovation (building on Connector, sensors)
- **Real-time sensors** starting to inform strategic and delivery decision making
- **Annual campus travel survey refresh**
- **Increasing engagement with public transport user groups**
- **Wayfinding improvements**
- **Strategic coordination with Local Authority partners**
  - Focus on e.g. user experience, station integration and connectivity, CSET delivery, bus franchising, etc
- **Communication improvements**
  - to improve journey planning and experience



# **Transport: Improving Communications**

# Making use of the Campus website

Feb 26, 2026

Road closure: Puddicombe Way, 28 Feb - 2 Mar



Future plans



## CBC Busway works timeline

### 1st March only

Full Busway bridge closure.

### 2<sup>nd</sup> March until end of April

Busway bridge closed to all pedestrians and cyclists (any direction). Busway bridge closed to buses leaving Campus - diversion in place.

### 2<sup>nd</sup> and 3<sup>rd</sup> March only

Works on the Green require relocation of bus stops.



Shared through communications network and T+T

Also shared in local Facebook communities

# Campus Newsletter – new Transport feature



Welcome to the CBC Weekly Update, bringing you up to date on the latest news on Campus from the team at Cambridge Biomedical Campus Limited.

Happy new year to our campus community! We hope you all have a fantastic 2026.

*Simon from CBC Ltd*



## Bus service disruption due to further industrial action

Due to a pay dispute, Unite has informed Stagecoach East that it has confirmed industrial action in Cambridge will continue on the following dates:

- Monday 19th January

- Saturday 24th January

# We're on WhatsApp!



Get the latest news and  
events straight to your  
phone via our  
WhatsApp channel.

SCAN



Cambridge Biomedical Campus



Stay up to date with the Campus!



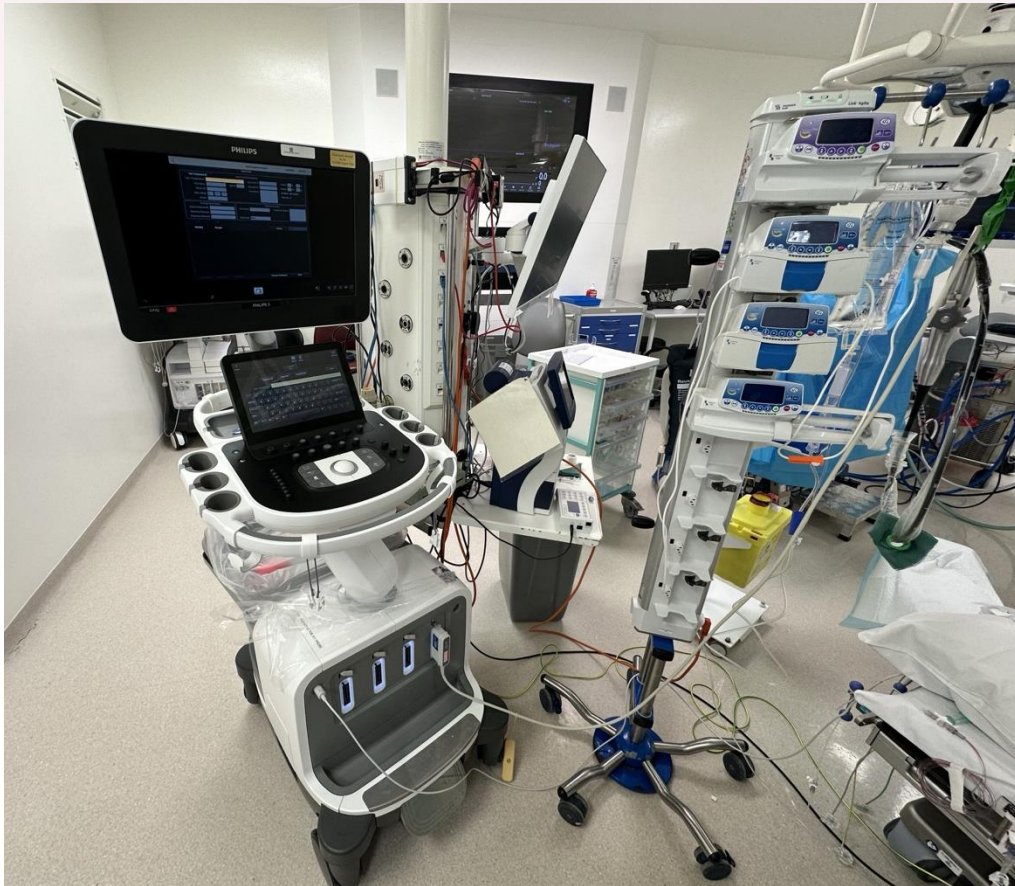


**Any questions?**



## Our hospital:

- Leading UK specialist centre for heart and lung care.
- Treats over 24,000 inpatients and nearly 74,000 outpatients annually.
- Performs around 72 adult heart, lung, and combined heart-lung transplants annually.



The charity exists to support the hospital and funds above and beyond what the NHS can provide, including:

- Innovative research
- Specialist equipment
- Patient care and support
- Staff wellbeing and development
- Health inequalities and community initiatives

# Meet Fran, a heart transplant patient



- Received a DCD (donation after circulatory death) heart transplant.
- DCD is a revolutionary way of extending the life of a donor heart
- Increases the number of available donor hearts, helping more patients receive transplants.
- Funded by Royal Papworth Hospital Charity
- Fran is doing very well and continues to fundraise for the charity

# Sancho, Pet Therapy Dog



- Three-year-old Sancho belongs to Pets as Therapy volunteer Oksana
- Visits patients on wards once a week
- Lifts morale, lowers stress and anxiety
- Comforts patients who miss their pets at home
- Staff enjoy seeing him too
- Charity funded as part of the Health & Wellbeing fund



- Emotional and financial support for staff
- Health & Wellbeing initiatives
- Staff Networks promoting inclusion and diversity
- Training and education grants
- Improved staff rest areas

# Get involved



## You can:

- Fundraise
- Volunteer
- Choose us as your Charity of the Year
- Join a Team Royal Papworth challenge
- Enter Brick Prize Draw
- Play our Lottery

# The Royal Papworth Charity Team



## Get in touch

- [papworth.charity@nhs.net](mailto:papworth.charity@nhs.net)
- 01223 639950
- [royalpapworthcharity.com](http://royalpapworthcharity.com)
- Follow us on Facebook, Instagram and LinkedIn





# Campus 5k, 10k and Fun Run

## Returns on Sunday 19th April

- Last year we had 1000+ participants raised £18,000 for charity
- Reduced prices for adults
- Free for u17s
- Commercial sponsorship by Prologis





# Big screen

- **29th June-12th July**
- **Wimbledon**
- **Film nights**
- **Other films and stills**
- **Completely free**



# Careers Fair

## 11th March

- 270 attendees
- 25 exhibitors
- Workshops and talks
- Careers skills

*“I've attended this event previous years, and it's good to see how it's evolved and the many talks and workshops it has included this year”*



# Open Mic

- 13 performers
- Returning in July

Cambridge  
Folk Festival

ESTD. 1965





# Local Voices

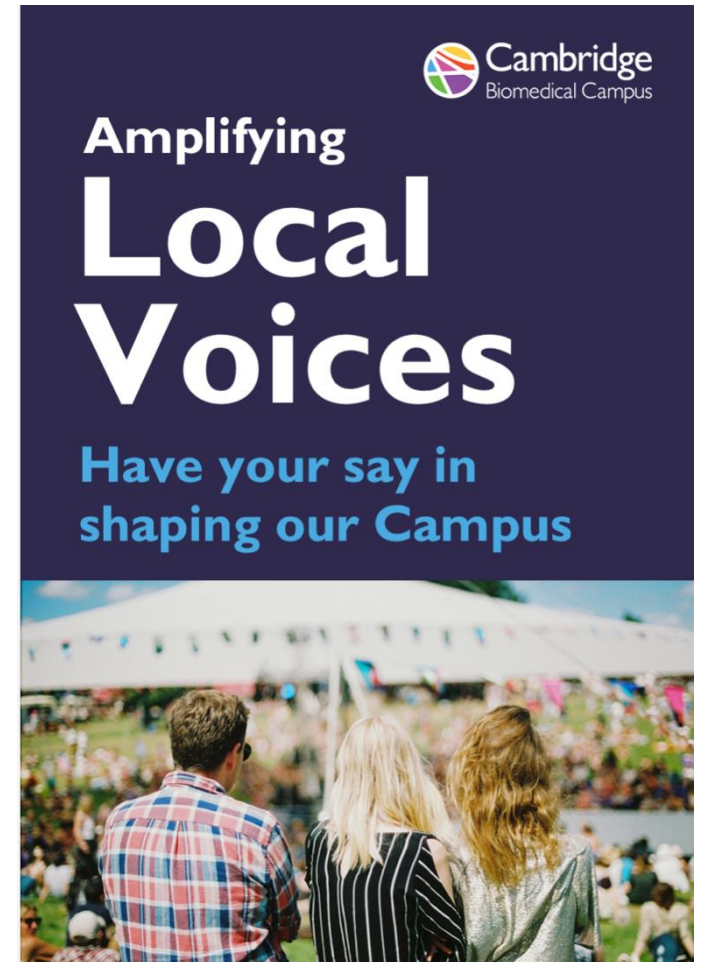
A diverse group of volunteers (including staff) helping us make the Campus a better place.

We want to understand the views of our community and those most affected by what happens on the Campus to help shape the events we run, how people find their way around and where and how we develop the site.

Highlights from the first year include:

- Feeding into our CBC transport plan
- Contributing ideas to the meanwhile use programme
- Co-design of our events programme
- Provided insight into wayfinding and signage
- Involvement in the jobs and careers fair

**We would love for some more members.**



# Cambridge Children's Hospital: A Whole New Way

- A collaboration between CUH, CPFT, and University of Cambridge
- Fully integrated physical and mental healthcare
- Children, young people and family at the centre
- A regional hub for the East of England with global impact
- Pioneering research to understand the origins of disease, supporting earlier detection, intervention and prevention
- Better outcomes: shorter stays, school readiness and performance, improved life trajectories



# Cambridge Children's Hospital

## *Progress to date*

BOUYGUES

- Planning permission granted in March 2022
- Enabling works completed in Summer 2024
- Bouygues UK appointed as Construction partner in August 2025: Working to finalise designs, plans, construction timeline and maximum price
- A **collaboration hub** was installed on site in Autumn 2025 to provide working and meeting space for the project and construction team
- **Full Business Case Planned submission** September 2026, with Ministerial and Treasury approval expected Spring 2027
- **Full construction expected to commence** in 2027 for approximately 3 years
- **Construction completion and building open and operational** expected in 2031



# CAMBRIDGE CANCER RESEARCH HOSPITAL: *CHANGING THE STORY OF CANCER*

- Uniting world-class healthcare with cutting-edge research to transform the way we prevent, diagnose and treat cancer.
- Part of the New Hospitals Programme, 26,000m<sup>2</sup> seven-story NHS hospital housing three University research institutes.
- Harnessing advanced AI, real-time data, genomics to deepen our understanding, and translate discovery into care at scale.
- Building a unique picture of every patient's cancer – ensuring every treatment decision is truly personalised.
- Fueling scientific and economic growth across the UK and beyond.



# CAMBRIDGE CANCER RESEARCH HOSPITAL

## *PROGRESS TO DATE*

Part of the New Hospitals Programme, with planning permission in place, an approved Outline Business Case, and contractor appointed.

- **Planning permission** granted in April 2024.
- **Enabling works** completed in Summer 2025.
- **Laing O'Rourke appointed as Construction partner** in August 2023, now working to finalise designs, plans, construction timeline and cost.
- **Full Business Case** planned for submission in January 2027, with ministerial approval expected in Summer 2027.
- **Full construction** to take approx. 3 years, expected between 2027-30; with hospital operational in 2031.



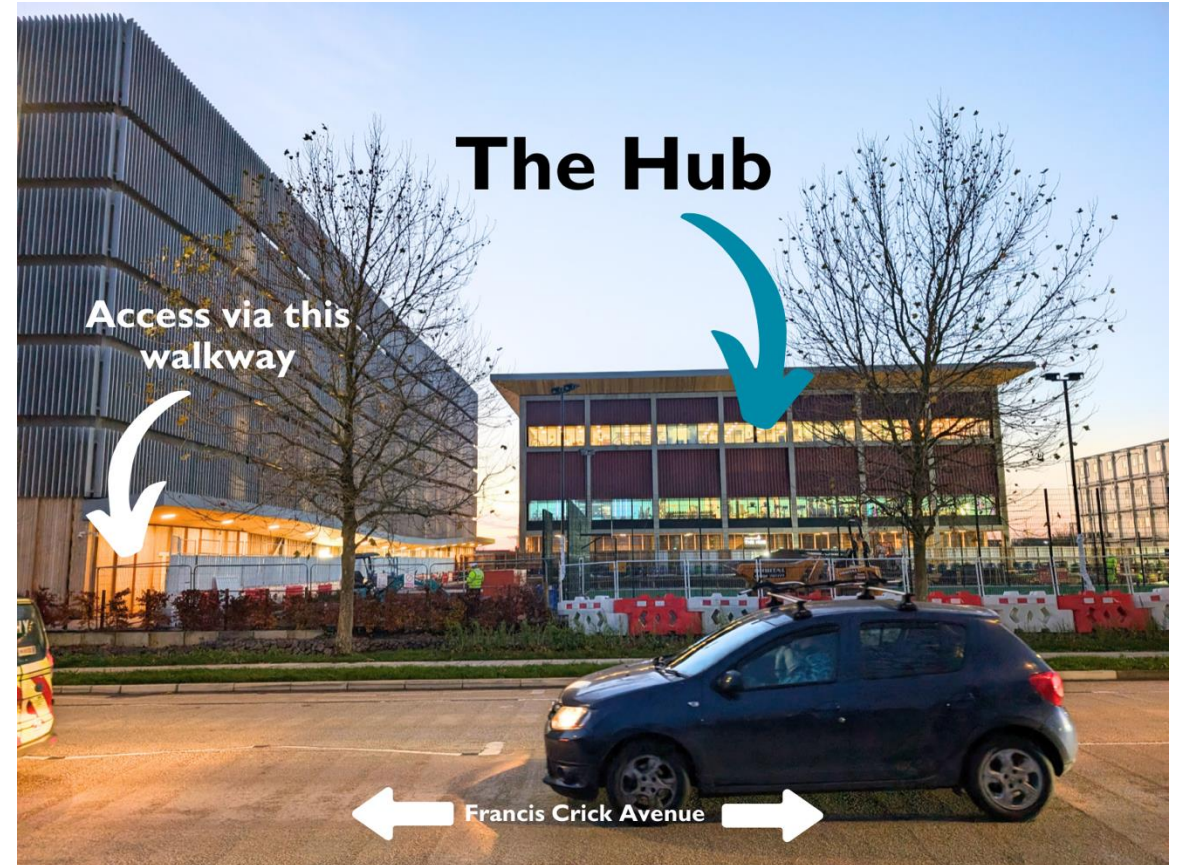


# Next Open Forum

**30th June 2026**

**The Hub on Campus**

**5.30-7pm**





Stay up to date with the Campus!

